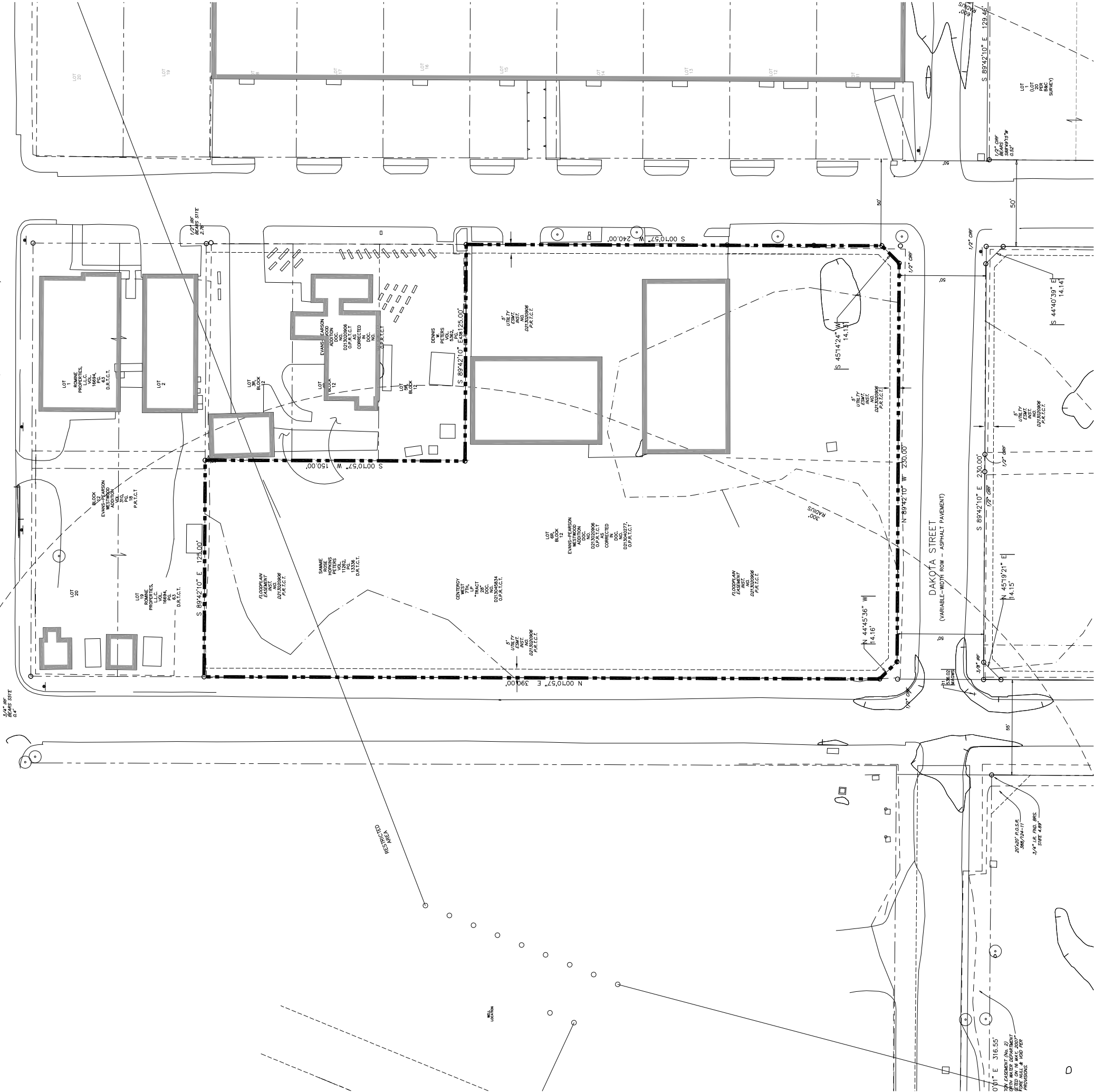


103  
535.02

KANSAS STREET  
(49.5' ROW - ASPHALT PAVEMENT)



0'01" E 316.55'  
30" WATER MAIN (NO. 2)  
FOR FULL & VARIOUS  
PROVISIONS

20'-00" R.O.S.E.  
889/724-11  
3/4" 1.5" DIA. GAS  
STREET 4.88"

5/4" R.F.  
GAS MAIN

5/4" R.F.  
GAS MAIN

KANSAS STREET  
(49.5' ROW - ASPHALT PAVEMENT)

DAKOTA STREET  
(VARIABLE-WIDTH ROW - ASPHALT PAVEMENT)

N 44°45'36" W  
14.16'

S 89°42'10" E 230.00'

S 89°42'10" E 129.46'

S 89°42'10" E 331.25.00'

S 89°42'10" E 331.25.00'

LOT  
BLK.  
EVANS-PEARSON  
WEST  
NO.  
D.P. & P.L.C.T.  
COMPLETED  
IN  
NO.

LOT  
BLK.  
EVANS-PEARSON  
WEST  
NO.  
D.P. & P.L.C.T.  
COMPLETED  
IN  
NO.

CONCRETE  
WEST  
NO.  
D.P. & P.L.C.T.  
COMPLETED  
IN  
NO.

LOT  
BLK.  
EVANS-PEARSON  
WEST  
NO.  
D.P. & P.L.C.T.  
COMPLETED  
IN  
NO.

LOT  
BLK.  
EVANS-PEARSON  
WEST  
NO.  
D.P. & P.L.C.T.  
COMPLETED  
IN  
NO.

LOT  
BLK.  
EVANS-PEARSON  
WEST  
NO.  
D.P. & P.L.C.T.  
COMPLETED  
IN  
NO.

LOT  
BLK.  
EVANS-PEARSON  
WEST  
NO.  
D.P. & P.L.C.T.  
COMPLETED  
IN  
NO.

LOT  
BLK.  
EVANS-PEARSON  
WEST  
NO.  
D.P. & P.L.C.T.  
COMPLETED  
IN  
NO.

103  
535.02